

## Windows XP / 7 / 8 / 10 Installation



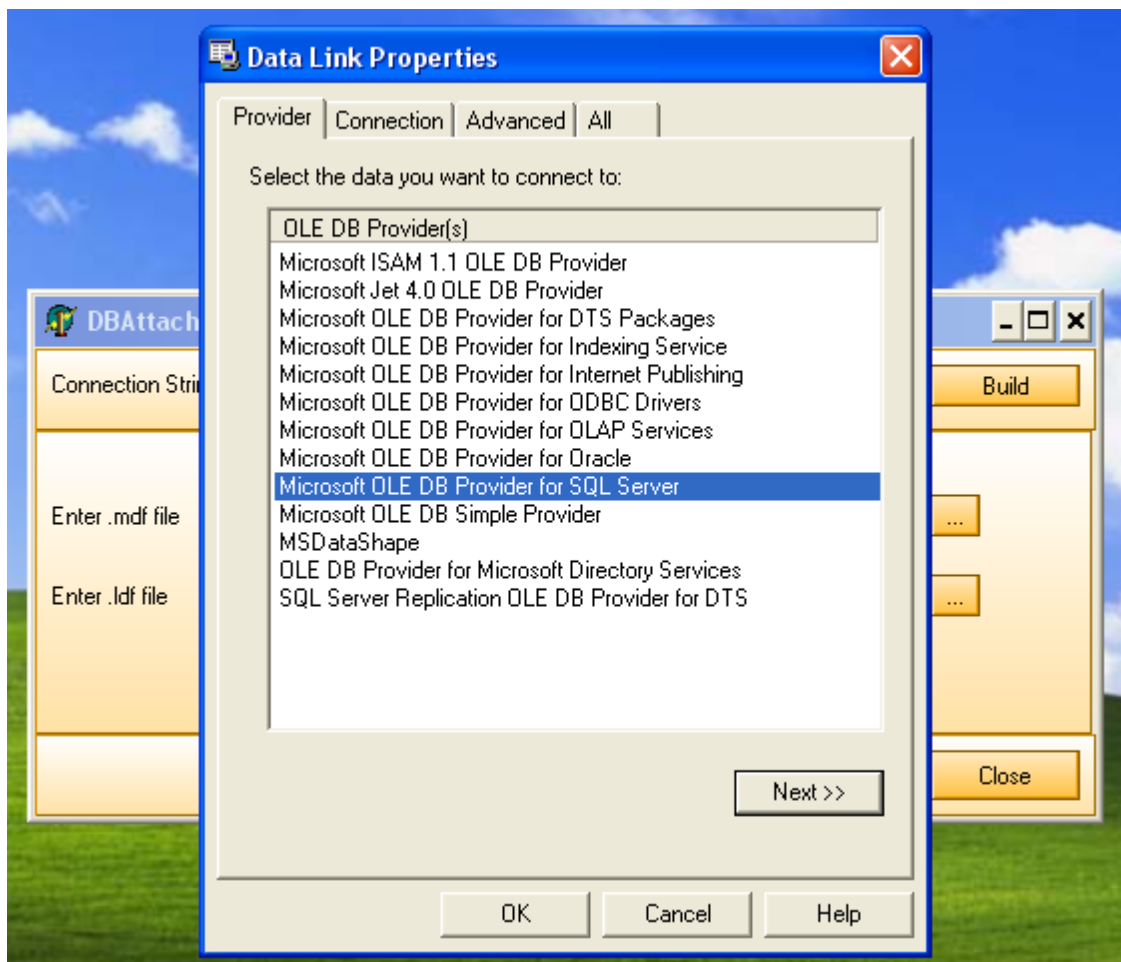
The first action to be taken after complete **Installation** and the **Restarting** of your computer, is to start the **DBAttach** application. The Short-Cut can be found in the **Programs folder** under **DBAttach**.



On running the application, apply the following steps:

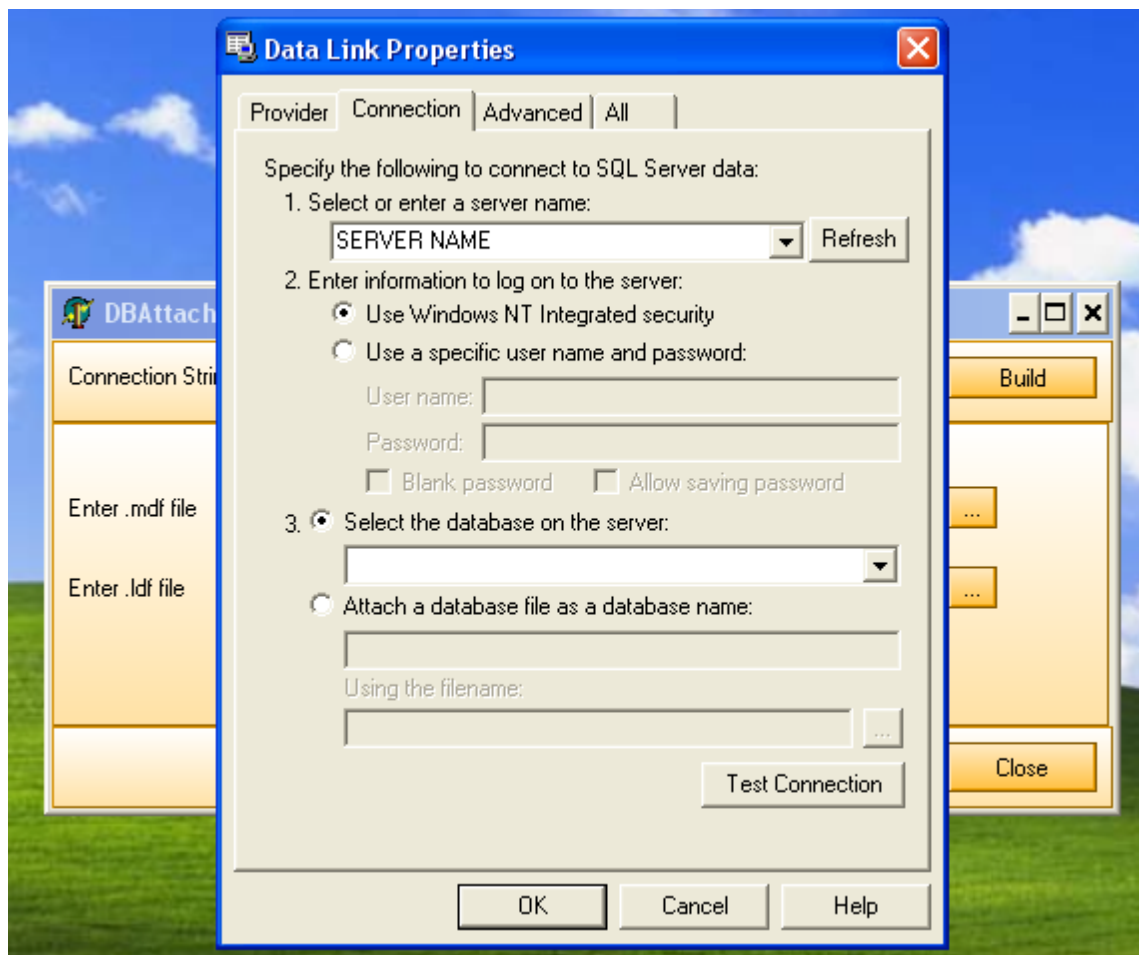
### Step 1:

Click on the **Build** button to open the SQL Server Window.  
Select the shown Provider in the following screen shot.  
Click on the **Next** button to move on to the Connection tab.



Fill in the Information as shown in the following screen shot. To see if the information is correct, click on the **Test Connection** Button. When finished click **OK**.

**IMPORTANT NOTE** - User Name and Password is not used.



## Step 2:

Type in a Name for the Database to be attached. e.g. - **My\_Database**

This DB Name can be given any name. It is just for your own description to recognize the database when making the final settings inside the application.

### Step 3:

Click on the **Ellipses** button to find the **\*.MDF** file.

It may look like this: **C:\Program Files\ExInvoicing\Data**

### Step 4:

Click on the **Ellipses** button to find the **\*.LDF** file.

It may look like this: **C:\Program Files\ExInvoicing\Data**

### Step 5:

Click on the **Attach** button to finalize the Attach operation.

Click on the **OK** button on the Message Dialog.

### Step 6:

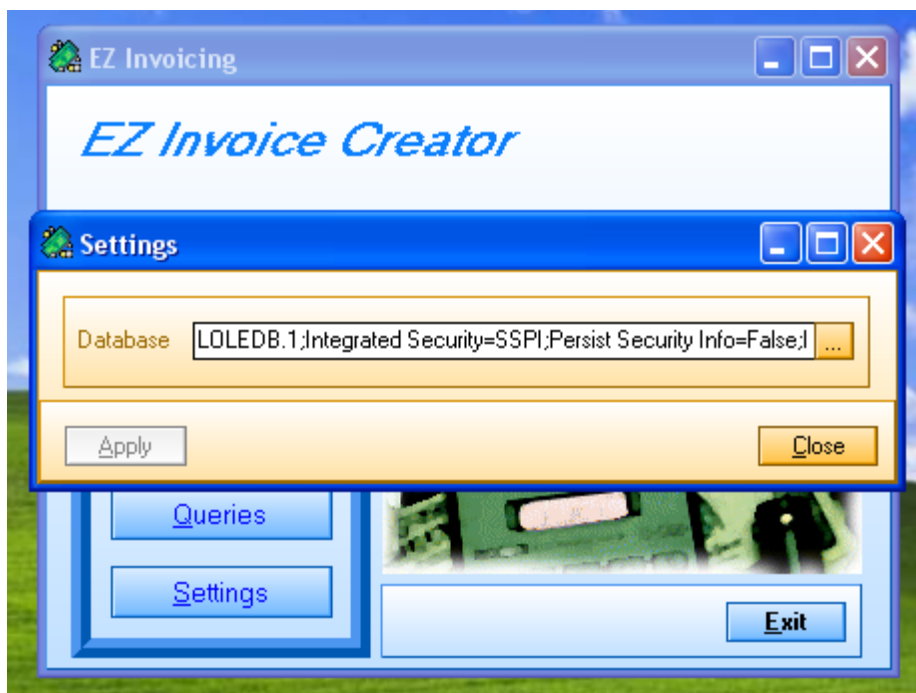
Click on the Main Form's **Close** button.

Now Open the ExInvoicing Application by clicking on the short-cut which may be found on the Desktop.

---

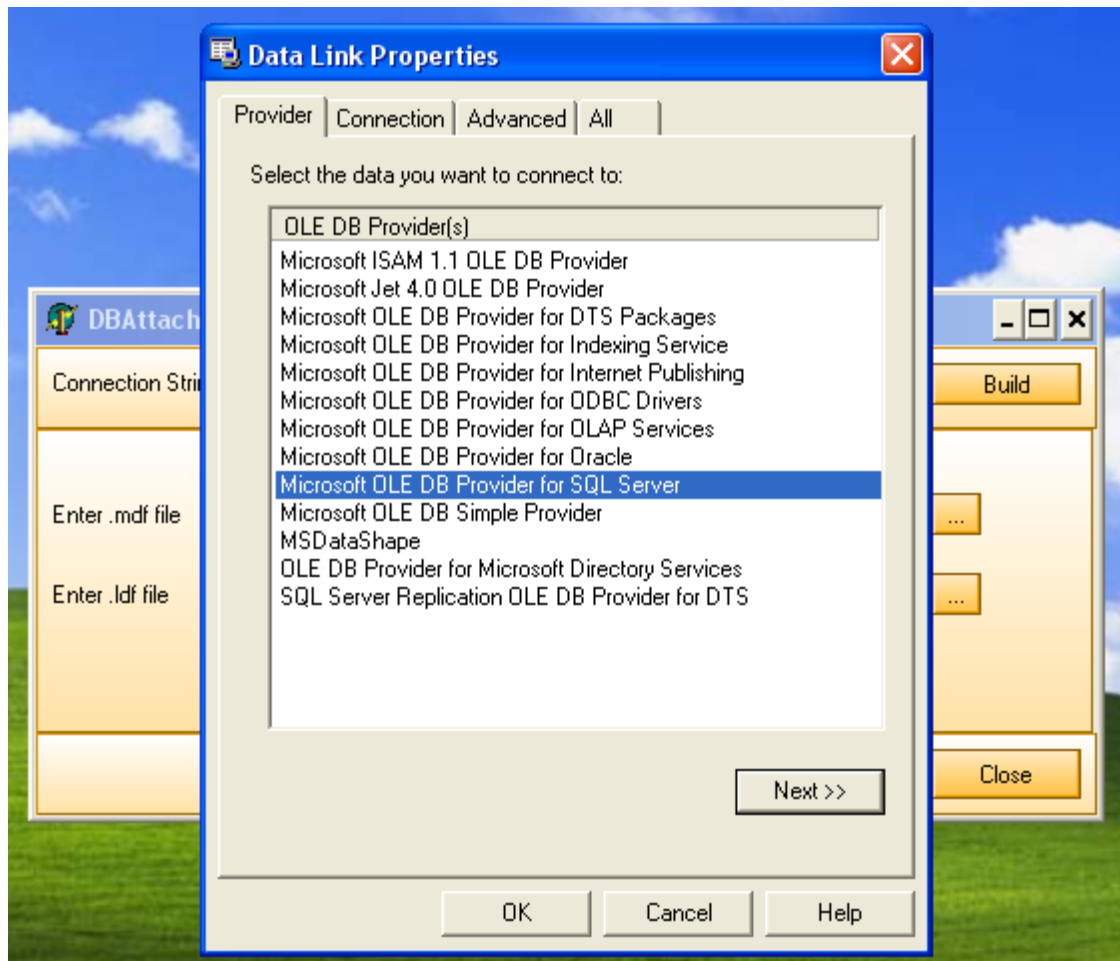
## Next Step Operations

On opening the ExInvoicing Application for the first time, you will find that only the **Settings** button is enabled. Click on the Settings button to view the following Screen shot.

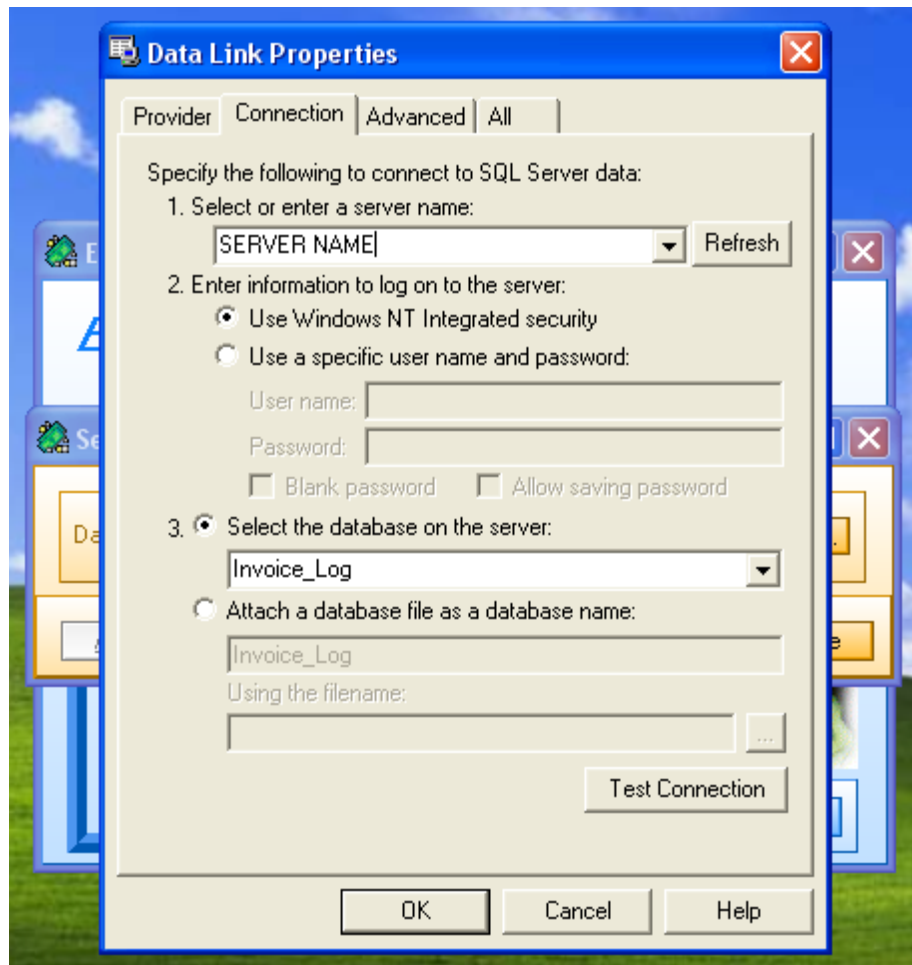


Click on the Ellipses button to Open the SQL Server Windows again.

Now select the Provider again as shown below, and click on the Next button.



Complete the Connection Tab as shown below.



Click on the **Test Connection** button to test the connection. If successful then click on the **OK** button. This will bring you back to the following form.

Click on the **Apply** button to finalize the procedure. If successful click **OK** on the Message Dialog and close the form. The application is now ready to be used.

