

# ***SSuite Office FHD+***

## ***The Office Suite that does it all...***

### Introduction...

This office suite was created for the professional and discerning computer user. The application interfaces have been enlarged to view the functions, features, and menu structures for better user-interaction on Full HD, large widescreen displays {e.g. 4K, 8K UHD}, and the latest Surface Pro tablets.

This office suite introduces some new innovative concepts in interface design and user-friendly application interaction. You also don't have a need for Java or .Net to be installed. This will save you a lot of hard drive space and precious computer resources.

The tabbed document interfaces also make it easier to find your opened documents with a single view. The thumbnail previews enhances the user-interaction further by displaying the whole document layout, whether you are creating pdf's, image documents, or simply displaying the print preview as you create your important document, thesis, letter, or birthday card.

This whole full featured office suite is less than 20 MB in download size. No other office suite can match our efficiency and small digital footprint...

*There is also No Java or DotNet required to run our software...* 🌟😊

*This is **v2.40.4** series with **NetVine LAN Suite...***

<https://www.ssuiteoffice.com/software/ssuiteofficepremiumhd.htm>

1600 x 900 Widescreen+

<https://www.ssuiteoffice.com/software/ssuiteomegaofficehd.htm>

1920 x 1080 FHD + 4K / 8K UHD

# *NEW ONLINE RELEASE*

**SSuite Spartan FHD+** – Online Virtual Desktop Office Suite! 🤖

<https://spartan.ssuiteoffice.com>

With us you get it all for free! – So please enjoy our premium office suite you have just installed.

\*\*\*\*\*



*Donate and become our Hero!*

<https://www.ssuiteoffice.com/donate.htm>

Make a donation and help support our efforts in providing you with free office software.

Your contributions are vital to the success of our initiative.

<https://www.ssuiteoffice.com/resources/windowswithnojava.htm>

---

Experience the fastest and most secure browser...



*... SSuite NetSurfer Browser ...*



Windows Desktop, Portable, Gaming, and Android Editions Available!

<https://www.ssuiteoffice.com/software/netsurferwebbrowser.htm>

Try our new Online Apparel and Home Decor Store...

<https://ssuite-office-store.creator-spring.com/?>

Thank you for supporting us!



\*\*\*\*\*



## **SSuite Office's User Tutorials**

Come have a look at all our tutorials to help you get the best out of any SSuite Office App...

<https://www.ssuiteoffice.com/tutorials.htm>

**Come help yourself to our free software and productivity tools**

<https://www.ssuiteoffice.com/freedownloads.htm>

**Come have a look at our new free Online Office Suite!**

<https://office.ssuiteoffice.com/>

\*\*\*\*\*

**Brand New HTML5 Web Apps Released, Forget the Cloud... Go Direct!**



Our own custom web search engine - GROOT

<https://groot.ssuiteoffice.com/>

Incase you were wondering what a **PWA** is... it's the next software revolution!

**Read more about it here:**

<https://blog.ssuiteoffice.com/articles/ssuiteoffice/what-is-a-pwa-and-how-to-install-it-with-google-chrome-browser.htm>

**Try our new online editions of WordGraph and Accel spreadsheet...**

WordGraph FHD+ Online Edition - <https://writer.ssuiteoffice.com/>

Accel Spreadsheet FHD+ Online Edition - <https://calc.ssuiteoffice.com/>

\*\*\*\*\*



## **SSuite Office Service Packs**

Stay up to date and get yourself the latest service packs straight from our website...

<https://www.ssuiteoffice.com/resources/servicepacks.htm>

\*\*\*\*\*



## **Software Help Files**

**Please take note about the help files:**

The help files will not open in Windows Vista or Windows 7 / 8 / 10 / 11 and beyond. Windows itself displays a message that says it does not support "WinHlp32.exe" anymore.

The Windows Help program (WinHlp32.exe) is no longer included with Windows Vista or Windows 7 / 8 / 10 / 11 and beyond. Users who want to view 32-bit .hlp files must download the program from the Microsoft Download Centre, and then install it on their computers. All 3rd party software developers are prohibited from distributing this file with their software installation(s).

Below are all the download links to the relevant Windows operating systems that needs the "WinHlp32.exe" executable to perform correctly.



**Click below get the latest Help-File for your Windows System:**

<https://www.ssuiteoffice.com/resources/How-To-Run-Helpfiles-On-Windows.htm>

**OR download directly from us...**

<https://www.ssuiteoffice.com/software/mswindowswinhlp32pack.htm>



To install, just double-click on the downloaded file and Windows will do the rest. The help files will now run normally. There is no need for a restart.

{ WinHlp32.exe - 640 KB in download size }



**The Windows 10 "WinHlp32.exe" will NOT be released...**

**Microsoft has announced that it will not implement this file for future use in Windows 10!**

## **Windows 10/11 and beyond...**

**Quick Solution without the help of Microsoft or any installations:**

For users who need "winhlp32.exe", just get a copy from a Windows XP system.

It is located in **c:\windows**. Then, on Windows 10, boot to the command prompt or login using the built-in "Administrator" account, go to the windows folder, and replace the stub with winhlp32.exe from the XP system.

Problem solved - until you run sfc /scannow. This is yet another annoyance caused by Microsoft not wanting us to have a functional HELP for older programs.

**Download WinXP Helpfile here:**

<https://www.ssuiteoffice.com/downloads/windows/WinXP-winhlp32.zip>

**How to enable the hidden "Administrator" Account in all of the Windows systems:**

**Run the command prompt { Admin } and enter:**

**net user administrator /active:yes**

This will then activate the account. Just log off and re-login with the Administrator account. No password is necessary, just press on the enter button to continue.

**To disable the Admin account:**

**net user administrator /active:no**

\*\*\*\*\*

**Windows printer environment...**

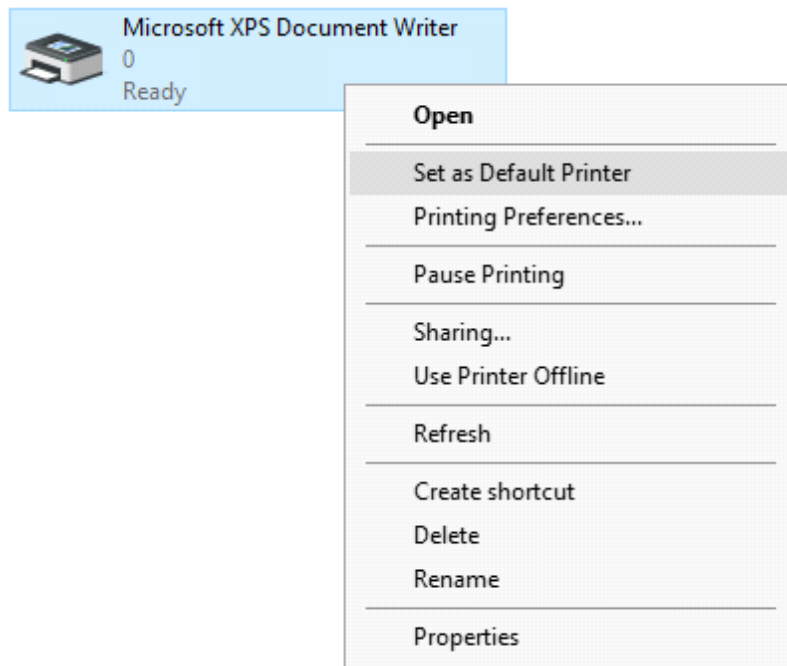


If you are installing this software on a stand-alone computer that does not have a printer connected or does not have a printer driver installed, please simply install or load a generic driver from Windows's list of drivers. You may install any ink jet printer driver from Canon or HP for best results.

If you have a printer, make sure it is connected and switched on, as you may get an error message saying the WordGraph application has stopped working { This is a Windows 10 Error, our application is NOT at fault here }.

This only happens if you don't have a printer set as your default printer, the printer is not connected, or not communicating with your computer!

If you don't want to install a printer driver, simply go to the printer page on the control panel and select the Microsoft XPS Document Writer as the default Printer. As simple as that!






This is needed for creating the best enhanced working environment for our word processor's print preview features. Thank you!

\*\*\*\*\*


## How to use the new custom spell checker...

To use the custom spell checker successfully, just follow these easy steps...

1. To spell check a whole document, just click on the Custom Spell Checker button. 
2. To spell check a paragraph, just double-click / select the paragraph and click on  button.
3. To spell check a single word, just double-click / select the word or words and click on the  button.

That is it, the whole document, selected paragraph or word, will now appear in the Spell Checker automatically.

Just click on the "Start Checking" button and correct all your spelling mistakes fast... 

When you are finished spell checking, just click on the "Copy to clipboard" button and paste your corrected text back into your document... 

## SSuite Accel Spreadsheet:

- Remember to spell check **THEN** format your spreadsheet!

\*\*\*\*\*



### Supported Document File Formats in SSuite WordGraph HD+:

#### Standard Open / Save Document Formats:

1. Plain Text -- Plain Text ANSI ( \*.txt )
2. XML File Format -- XML File ( \*.xml )
3. C++ File Format -- C++ File ( \*.cpp )
4. SQL File Format -- SQL File ( \*.sql )
5. Pascal File Format -- Pascal File ( \*.pas )
6. C++ Header File Format -- Header File ( \*.h )
7. Rich Text Format -- Rich Text Format ( \*.rtf )
8. Web Page Source File -- Web Page ( \*.htm, \*.html )
9. SSuite Rich Text Compressed Format {up to 90%} -- Rich Text Compressed ( \*.rtc )
10. **Microsoft Word Document Format - Word 97-2003 & 6.0/95 - RTF ( \*.doc )**

MS Office 95 - 2007



#### **Please Take Note:**

There are two different types of **doc** formats available. The first type is the official proprietary **MS Doc** format that is locked and requires a licence from Microsoft. The second **doc** format is the one we use, which is an open generic **doc** format that does not require special software to open...

*hence the name - **Word 97-2003 & 6.0/95 - RTF ( \*.doc )***

#### Digital Document Formats in WordGraph HD+: { Keeping it Green - No More Paper }

1. Windows Bitmap File Format -- ( \*.bmp )
2. Tagged Information File Format -- ( \*.tiff )
3. Portable Document File Format -- ( \*.pdf )
4. SSuite Presentation File Format -- ( \*.ssp )
5. Graphics Interchange File Format -- ( \*.gif )
6. Windows Enhanced File Format -- ( \*.emf )
7. Joint Photographic Experts Group -- ( \*.jpg )
8. Portable Network Graphic File Format -- ( \*.png )
9. Portable Documents File Format -- Text Only ( \*.pdf )





## Document File Formats in SSuite Accel HD+ Spreadsheet:

### Spreadsheet File Formats:

1. SSuite Accel Workbook -- Accel File ( \*.vts )
2. Tabbed Text File Format -- Tabbed Text File ( \*.txt )
3. Microsoft Excel 4 Worksheet File Formats -- MS Excel 4 ( \*.xls )
4. Microsoft Excel 5 Workbook File Formats -- MS Excel 5 ( \*.xls )
5. Tabbed Text File Format -- Tabbed Text File (Values Only) ( \* txt )
6. Comma Separated File Format -- CSV (Comma Delimited) ( \*.csv )
7. **SSuite Basic-Math Spreadsheet** -- SSuite Basic-Math Spreadsheet ( \*.bms )

**\*\*\* NEW Online Spreadsheet Document Format\*\*\***

Come have a look at all our free Web and Android apps:

<https://www.ssuiteoffice.com/categories/webapps.htm>

**or**

<https://office.ssuiteoffice.com/>

...this is also a Progressive Web Application { PWA }, another world first for us...



All Microsoft Excel documents created in SSuite Accel spreadsheet, are fully compatible with any spreadsheet application that can open and read the Microsoft Excel file format.

When printing in SSuite Accel spreadsheet, please see the help file for Header and Footer settings e.g. Page number, Date of worksheet printed etc...

When making your Excel 97-2007 workbooks and spreadsheets compatible with SSuite Accel spreadsheet, please read the procedure for this under "File Handling" in Accel's help file. Microsoft locks all of its documents.

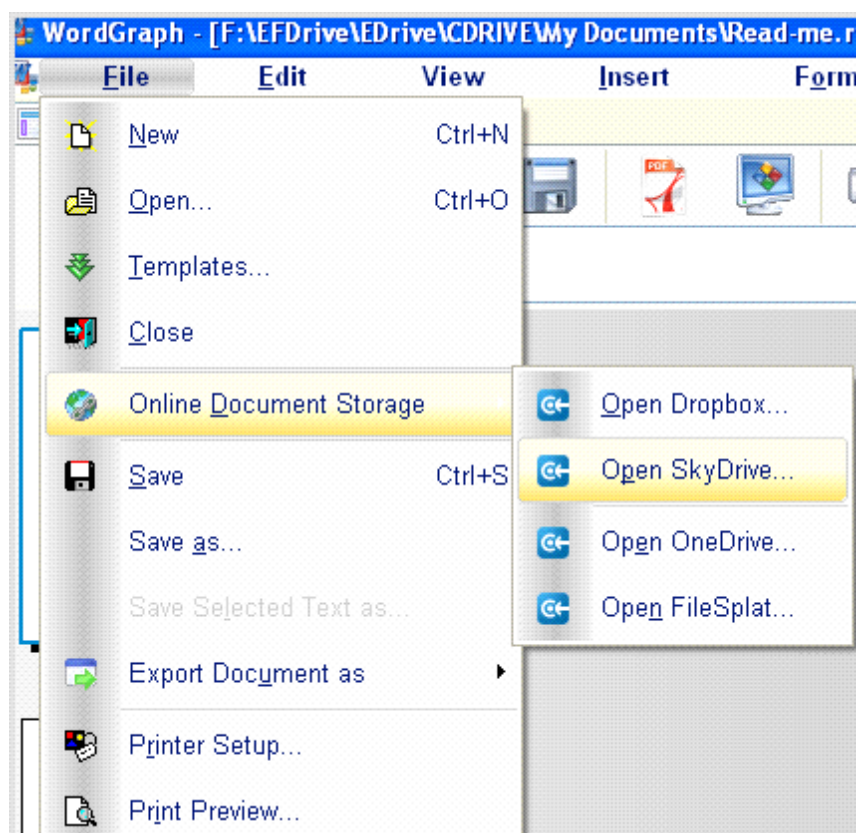


## New Changes made:

### Application Updates:

Access the cloud directly from within our applications. Dropbox and OneDrive is fully supported. Just open the window, login, and access all your online documents.

**Available in SSuite Premium HD and OmegaOffice HD+...**



### SSuite OmegaOffice HD+ Only...



Now you can create presentations in WordGraph without any effort, just export your work as a "SSuite Presentation" file - \*.ssp >> "SSuite Presentation" files can be viewed in the EZPhoto Album viewer or any current web browser.

The "Recent Documents" application has a new "File Portal" feature for easier file transfer over networks. Simply drag and drop{or double-click} any file or document onto the zone, and it will be transported immediately to the destination I.P. address or PC host name -(the recipient must also be running the same application).



**Please remember to enable "View File Extensions" in Windows Explorer to use the recent document's list successfully.**

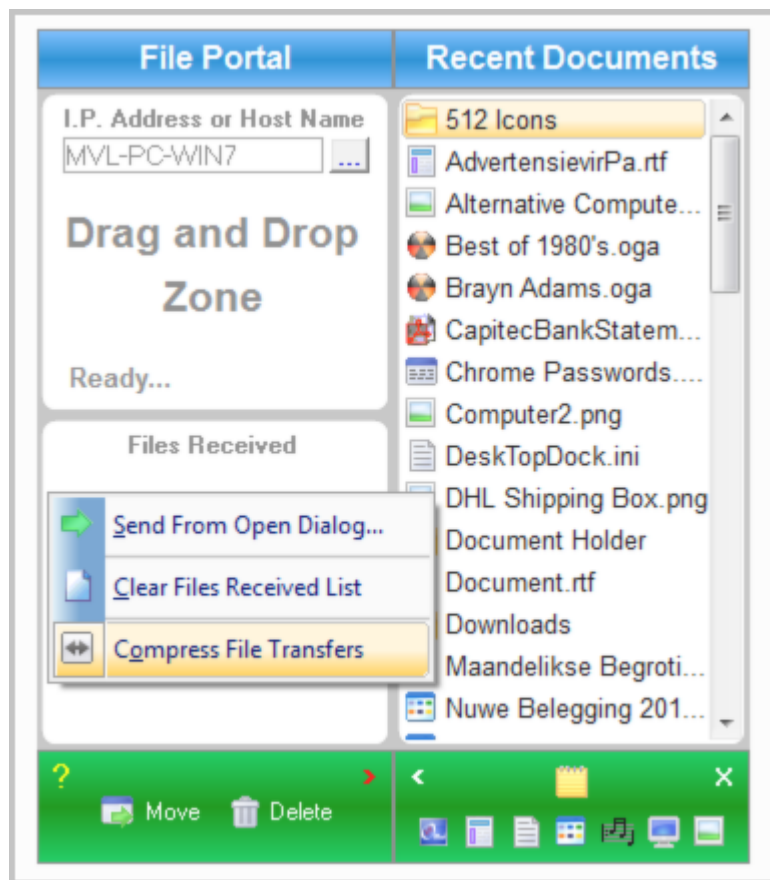


You may drag a file or document from the desktop or Windows Explorer, or just **double-click/right-click** to open the “Open Dialog”, or drag from the recent documents list or send the same received file back to where it came from, by simply dragging{or double-click} it onto the drop zone.



We now have file compression for faster data transfers...

...just right-click and select the option on the shortcut menu as seen below...



Hi-Tech Communications and Data transfer made simple...

\*\*\*\*\*



### Updates Made to the Graphical Software:

SSuite Image Editor - New interface cursors for better viewing and also enhanced importing and exporting of image formats. New Print Preview added. New toolbar, colour bar added.

## Import / Open:

Portable Network Graphic - \*.png with transparency  
Graphics Interchange Format - \*.gif with transparency  
Graphics Interchange Format Animated - \*.gif { Multi-Frame Compatible }  
Joint Photographic Experts Group - \*.jpg ; \*.jpeg  
Windows Bitmap - \*.bmp  
Windows Metafile - \*.wmf  
Windows Enhanced Metafile - \*.emf

## Export / Save:

Portable Network Graphic - \*.png with transparency  
Graphics Interchange Format - \*.gif with transparency  
Joint Photographic Experts Group - \*.jpg  
Tagged Information File Format 6.0 - \*.tiff  
Windows Bitmap - \*.bmp  
Windows Enhanced Metafile - \*.emf

\*\*\*\*\*

*Please help support our efforts by making a donation or contribution... Thank you...* 🍌

<https://www.ssuiteoffice.com/donate.htm>

Make a donation and help support our efforts in providing you with free office software.

Your contributions are vital to the success of our initiative.

<https://www.ssuiteoffice.com/resources/windowswithnojava.htm>

Or try our new Online Apparel and Home Decor Store...

<https://ssuite-office-store.creator-spring.com/?>

Thank you for supporting us! 🍌



## More About Us...

<https://www.ssuiteoffice.com/aboutus.htm>



### Contact Details:



Web address : [www.ssuiteoffice.com](http://www.ssuiteoffice.com)  
General Queries : [www.ssuiteoffice.com/support.htm](http://www.ssuiteoffice.com/support.htm)  
Tutorials and Resources : [www.ssuiteoffice.com/tutorials.htm](http://www.ssuiteoffice.com/tutorials.htm)  
Free Service Packs : [www.ssuiteoffice.com/resources/servicepacks.htm](http://www.ssuiteoffice.com/resources/servicepacks.htm)  
Free Software Downloads : [www.ssuiteoffice.com/freedownloads.htm](http://www.ssuiteoffice.com/freedownloads.htm)



## ***SSuite Office FHD+ Series***



**Stay Compatible - Stay Productive - Stay Connected**

\*\*\*\*\*



**SSuite Office Software**  
Pure Visual Simplicity™



## **Go Green With Us:**

<https://www.ssuiteoffice.com/aboutus.htm#318490165>



**Does not contain any spyware, malware, viruses, or any other third-party software!**



**SSuite Office Premium HD+ 1600 x 900 Widescreen+**

**SSuite OmegaOffice HD+ 1920 x 1080 FHD including 4K + 8K UHD....**

### **Installation Instructions for all our free office suites and applications in General:**

- Before running any software applications, please read the "Read Me" document first!



Open Source Software Sucks Eggs Big Time!!!



Good Bye... So Long... and thank you for all the fish! This will be my final release...